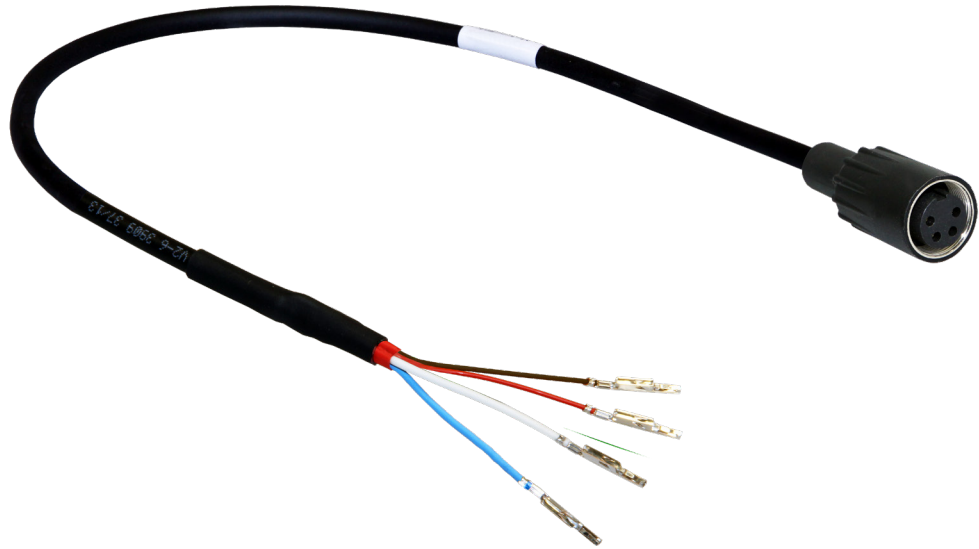


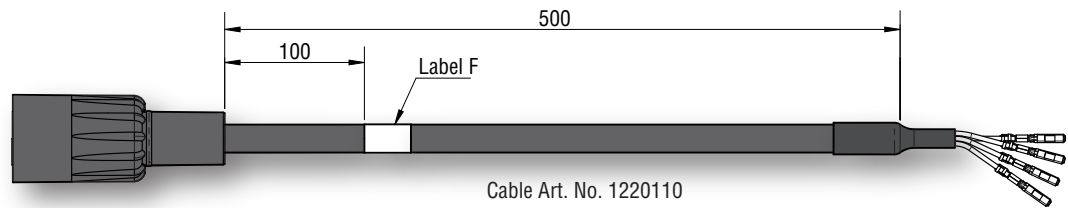
Vision is  
our mission®

Adapter cable 0,5m M16 J9P 4pF  
Article no. 0309130  
2019 • DS0960322 EN A 01

# Product Data



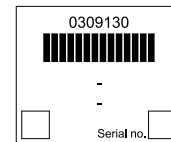
## Dimensions



4p M16 female molded connector

Cable Art. No. 1220110

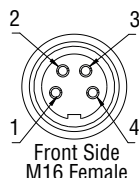
Label F



# TECHNICAL DATA

## Adapter cable 0,5m M16 J9P 4pF

<b>Article number</b>	<b>Description</b>
<b>Cable length</b>	0,5m.
<b>Connector</b>	Molded connector 4p female
<b>Cable</b>	3 x AWG22, 7 x 0,25mm, tinned copper, Jacket: TPE-U Sh A 85 +/-5; Halogen Free, overall diameter 6mm +0,0/-0,2mm, Color: Black RAL 9005.
<b>Temperature range</b>	-40°...+85°C. (fixed).
<b>Coax impedance</b>	75Ω
<b>Approvals</b>	Chemical Resistance: Oil, Mud. Fire resist: IEC 60332-2-1, IEC 60332-2-2. Halogen free: DIN VDE 0472 part 815. Cable is designed according UL Style 20549.
<b>Min. bending radius</b>	7,5 x Diameter (Static).

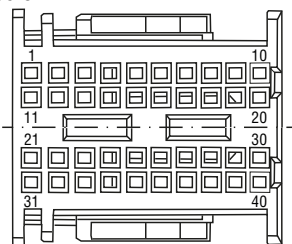


### Electrical connection

Molded connector 4p female  
 Cable Art. No. 1220110  
 1 = White = Coax  
 2 = Blue = Coax shield  
 3 = Red  
 4 = Black

Use power plug X43 (part No: A 009 540 30 81) to install up to 4 camera's to the Xentry system.  
 The below overview shows the pin layout for all 4 camera's and the connector:

	(white) Video in	(Blue) Shield	(Red) Power	(black) Ground
Camera 1	P4	P14	P10	P20
2	P13	P3	P9	P19
3	P2	P12	P8	P18
4	P11	P1	P7	P17



To show image the Xentry setting need to be changed in the menu:

Go to "Backup camera"

Selection
+ Teach-in processes
- Parameterization
Service measure
Backup camera
Indicator lamps
Warning message
Virtual switch 'Body manufacturer'
Retrofit installations and modifications
+ Initial startup

Change backup camera availability:

No.	Name	Value
2600.70	Vehicle equipment Backup camera	AVAILABLE
4100.00	Backup camera Video signal source 1	AVAILABLE
4100.01	Backup camera Video signal source 2	NOT AVAILABLE
4100.02	Backup camera Video signal source 3	NOT AVAILABLE
4100.03	Backup camera Video signal source 4	NOT AVAILABLE
4100.05	Display Backup camera wenn Reverse gear ENGAGED	Camera 1
5000.40	Camera 1 Text Database	255.0
5000.41	Camera 2 Text Database	255.0
5000.42	Camera 3 Text Database	255.0
5000.43	Camera 4 Text Database	255.0
5000.44	Camera 5 Text Database	255.0

All data subject to change without notice. All dimensions are for commercial purpose only.  
 The camera/display systems from Orlaco comply with the latest CE, ADR, EMC and mirror-directive regulations, where applicable.  
 All products are manufactured in accordance with the ISO 9001 quality management system, IATF 16949 quality automotive, ISO 14001 environmental management systems and all Ex products with the IECEx scheme and ATEX directives, where applicable.

